

How

to set up an



*AirPort
Network*

About this guide

This guide will assist you in setting up an AirPort Wireless Network. It is designed for use by those who are familiar with ethernet computer networks and have extensive knowledge regarding the specifics of any existing network that the AirPort will coexist with. This includes knowledge of how Internet Protocol addresses are assigned on the existing network and their numeric range.

If you are setting up AirPort on an AirPort capable Apple Computer , and both the Computer and Base station have not previously been configured for AirPort, follow the direction that came with your Apple AirPort Base Station.

| Lesson | Page |
|---|-----------|
| 1. Setting-up an AirPort Base Station | 2 |
| 2. Upgrading Software on a configured AirPort Base Station | 17 |
| 3. Setting up an AirPort-Ready Apple Macintosh for use on an existing AirPort network that is part of a Local Area Network | 20 |
| 4. Setting up an AirPort-Ready Apple Macintosh for use on an AirPort connected to a modem. | 27 |
| 5. Setting up a Windows PC for use on an AirPort network that is part of a Local Area Network | 34 |
| 6. Setting-up Airport on Your Apple PowerBook using a Local Area Network | 49 |

1. Setting-up an AirPort Base Station

What you will need



You must use a Macintosh, which meets the following requirements, in order to properly configure each AirPort Base Station on your network. Once configured, the AirPort Base Station may be accessed by both Windows and Mac OS computers.

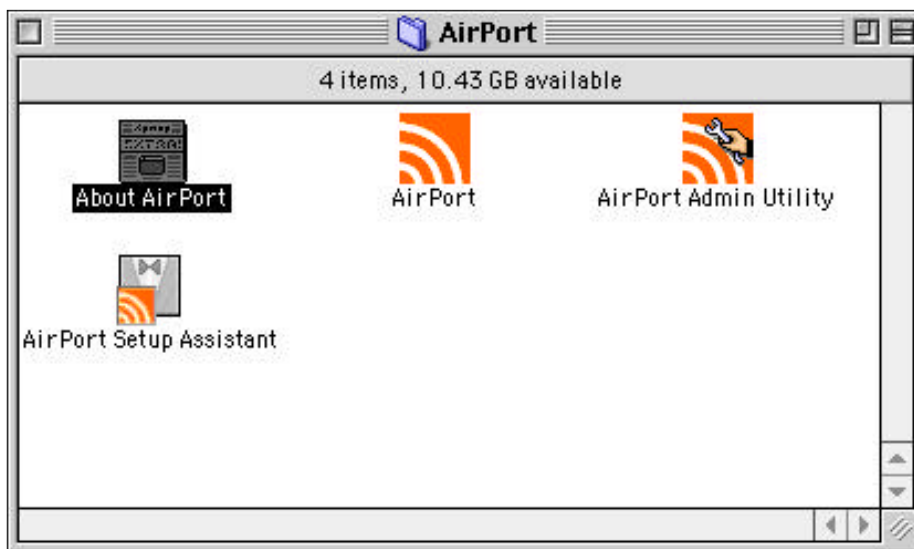
| If you are using | You will need |
|---|---|
| Apple PowerBook (without an internal AirPort Card slot) | <ul style="list-style-type: none">• A Lucent WaveLAN IEEE 802.11 compliant 11Mb PC card• Mac OS 9.0 or higher• Apple AirPort 1.1 software• An AirPort Base Station |
| Apple AirPort-capable iMac, G4 Tower, or PowerBook G3 | <ul style="list-style-type: none">• An Apple AirPort Card• Mac OS 8.6 or higher• Apple AirPort 1.1 software• An AirPort Base Station |

1b. Setting-up an AirPort Base Station

Verifying you have Airport 1.1 on your computer

Action Steps

| What you type or do | What Happens |
|---|---|
| 1. Double-click the <i>Hard Drive</i> icon, located in the upper-right hand corner of your Mac OS <i>desktop</i> . | The <i>Hard Drive</i> window will appear. |
| 2. Double-click the <i>Apple Extras</i> folder. | The <i>Apple Extras</i> window will appear. |
| 3. Double-click the <i>AirPort</i> folder. | The <i>AirPort</i> window will appear. |

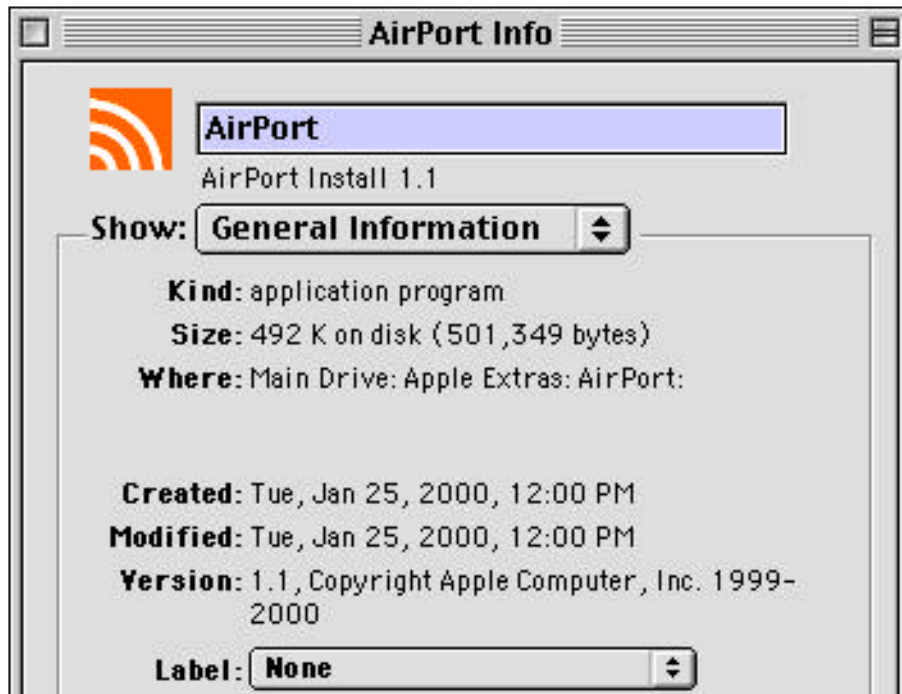


1b. Setting-up an AirPort Base Station

Verifying you have Airport 1.1 on your computer

Action Steps

| What you type or do | What Happens |
|---|---|
| 4. Click once on the <i>AirPort</i> application icon. | The <i>AirPort</i> application icon will become highlighted (darker). |
| 5. From the command bar, select <i>File, Get Info,</i> and <i>General Information.</i> | The <i>AirPort Info</i> window will appear. |
| 6. The Version listed, in the <i>Airport Info</i> window, should be 1.1 or higher. | If the Version is lower than 1.1 (i.e. 1.0 or 1.0.1) you should follow the instructions in the next section of this manual. |



1c. Setting-up an AirPort Base Station

Installing AirPort 1.1 on your computer



If you already have AirPort 1.1 installed on your computer, you should skip this section.

Action Steps

| What you type or do | What Happens |
|--|---|
| 1. Download the <i>AirPort 1.1</i> software from Apple Computer's web site at " <i>www.apple.com</i> " | |
| 2. Double-click the <i>AirPort Update 1.1.smi</i> icon, located on your desktop or preselected download folder. | A window containing a progress bar will appear and remain on screen until the downloaded file is verified. Afterwards, a disk image, named <i>AirPort</i> , will appear on the desktop and the window of that disk image will appear. |
| 3. Double-click the <i>Apple SW Install</i> icon located inside the <i>AirPort</i> disk image window. | The <i>Install AirPort</i> window will appear. |

1c. Setting-up an AirPort Base Station

Installing AirPort 1.1 on your computer



If you already have AirPort 1.1 installed on your computer, you should skip this section.

Action Steps

| What you type or do | What Happens |
|---|---|
| 4. Follow the on-screen instructions for installing the <i>AirPort</i> software. | |
| 5. Restart your computer. | |
| 6. After your computer restarts, the <i>Airport Setup Assistant</i> window will appear. | Do not use the Airport Setup Assistant to configure your computer at this time. Select <i>File, Quit</i> from the Command Bar to exit the <i>Airport Setup Assistant</i> Window. |

1d. Setting-up an AirPort Base Station

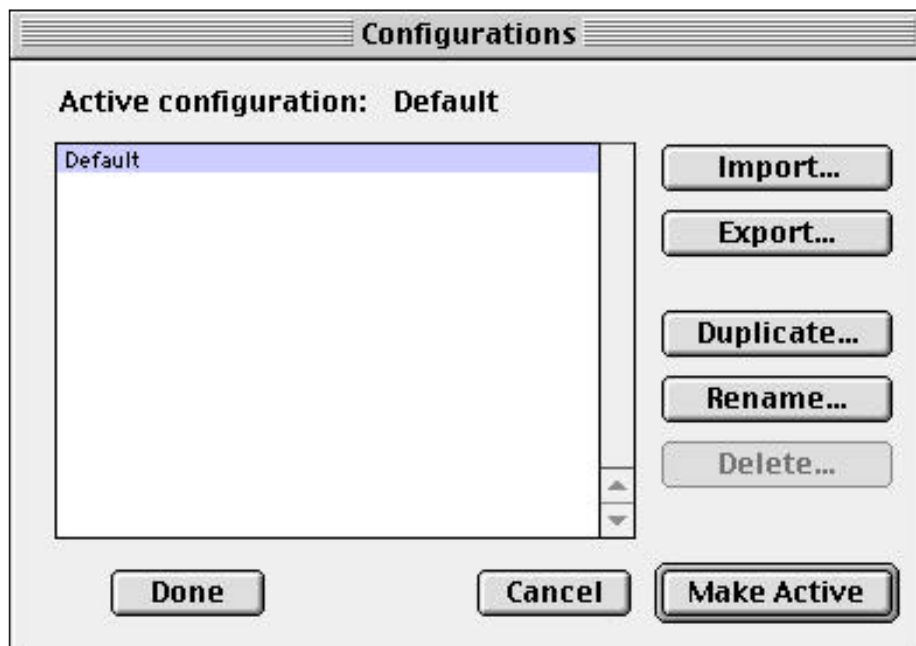
Connecting a new base station using the AirPort Admin utility



You should only use the AirPort Admin Utility to configure a new base station if you feel comfortable with network configuration.

Action Steps

| What you type or do | What Happens |
|--|--|
| 1. Turn <i>AirPort</i> on in the <i>AirPort</i> application or <i>AirPort</i> portion of the Control Strip. | |
| 2. Open the <i>TCP/IP</i> control panel and choose <i>Configurations</i> from the File menu. | The <i>Configurations</i> window will appear. |
| 3. Select an existing configuration and click <i>Duplicate</i> . | The <i>Duplicate Configuration</i> window appears. |

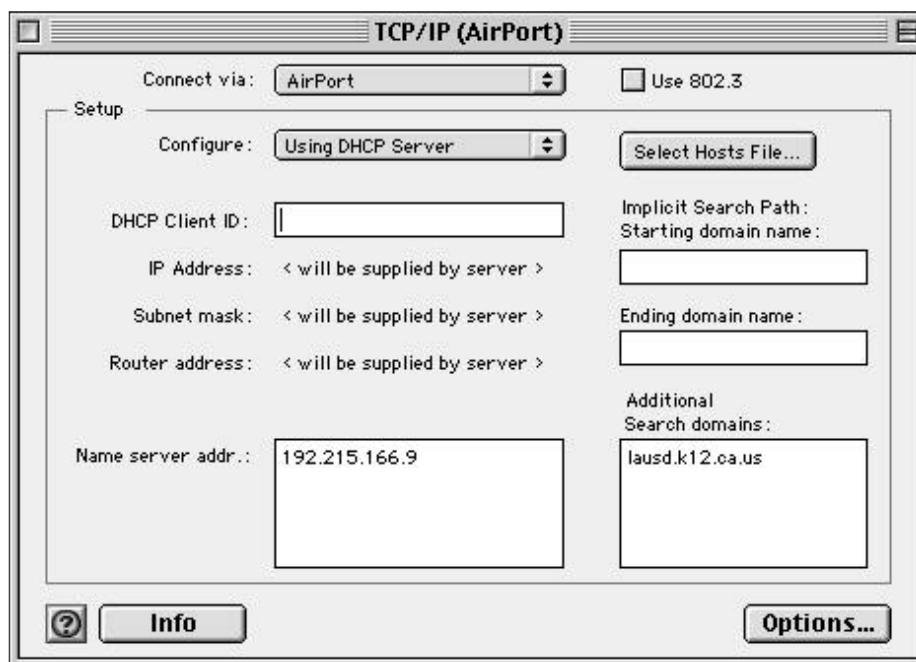


1d. Setting-up an AirPort Base Station

Connecting a new base station using the AirPort Admin utility

Action Steps

| What you type or do | What Happens |
|--|---|
| 4. Name the duplicate configuration "AirPort" and click <i>OK</i> . | |
| 5. Make sure your new configuration is selected and then click <i>Make Active</i> . | The <i>TCP/IP (AirPort)</i> window will appear. |
| 6. Choose <i>AirPort</i> from the <i>Connect via pop-up</i> menu. | |

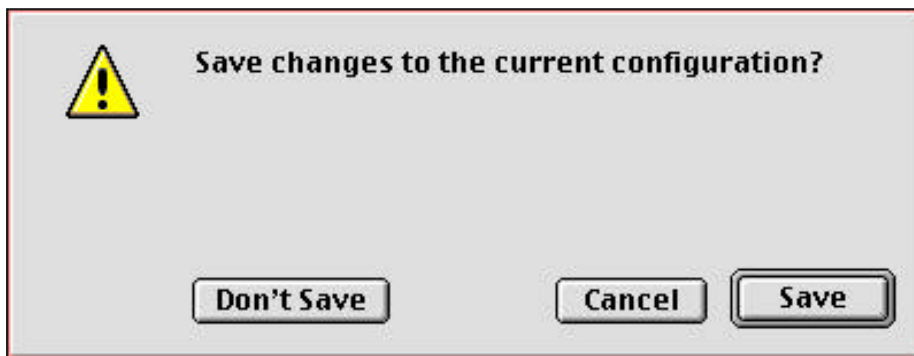


1d. Setting-up an AirPort Base Station

Connecting a new base station using the AirPort Admin utility

Action Steps

| What you type or do | What Happens |
|--|--|
| 7. Choose <i>Using DHCP Server</i> from the <i>Configure</i> pop-up menu. | |
| 8. Close the <i>TCP/IP</i> control panel, and when prompted, save your changes. | You may notice a slight delay after you close the <i>TCP/IP</i> control panel. |

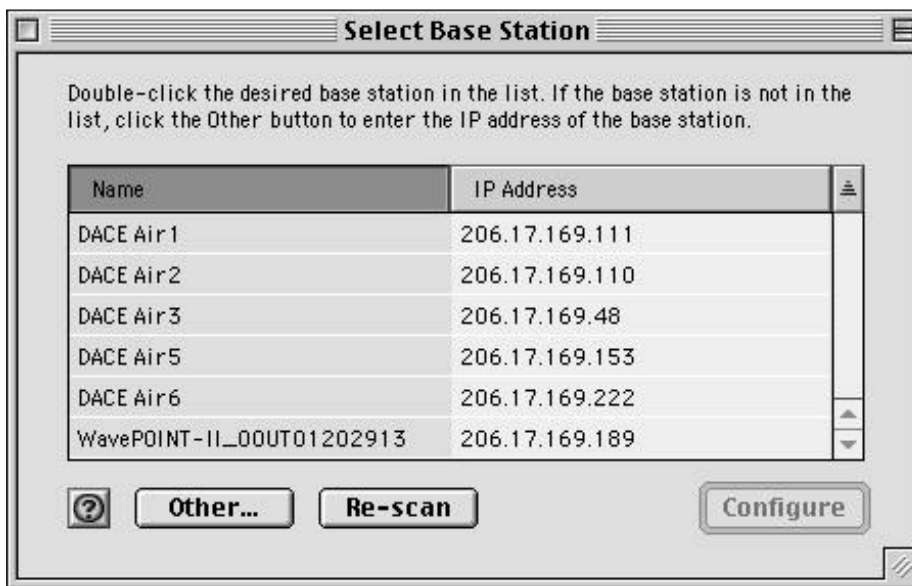


1d. Setting-up an AirPort Base Station

Connecting a new base station using the AirPort Admin utility

Action Steps

| What you type or do | What Happens |
|--|--|
| 9. Open the <i>AirPort Admin Utility</i> (located in the AirPort folder inside the <i>Apple Extras</i> folder on your hard disk.) | The <i>Select Base Station</i> window will appear. |
| 10. When the <i>Select Base Station</i> window appears, make sure that your base station appears in the list. (The base station will appear by its default name and IP address.) | |
| 11. Click <i>Other</i> . | |

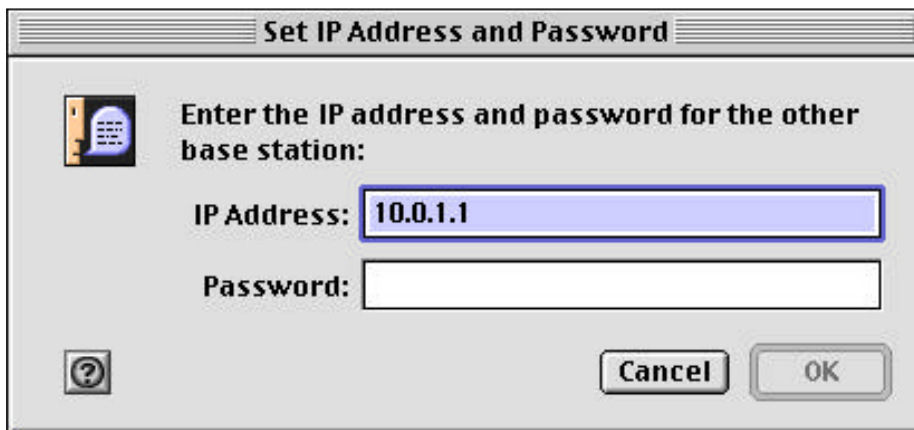


1d. Setting-up an AirPort Base Station

Connecting a new base station using the AirPort Admin utility

Action Steps

| What you type or do | What Happens |
|--|--|
| 12. When prompted enter "10.0.1.1" in the IP Address box and "public" in the password box. | Note: 10.0.1.1 may already be entered in the IP address box. |
| 13. Click <i>OK</i> . | The <i>Configure Base Station</i> window will appear. |
| 14. Click on the Airport tab. | |



1d. Setting-up an AirPort Base Station

Connecting a new base station using the AirPort Admin utility

Action Steps

| What you type or do | What Happens |
|--|--------------|
| 15. In the <i>Name</i> text area, type the name you wish to give the Base Station you are configuring. | |
| 16. In the <i>Contact</i> text area, type the name of the person who will be responsible for the administration of the AirPort network. | |
| 17. In the <i>Location</i> text area, type the location of the Base Station you are currently configuring (this will make it easier to identify). | |



The screenshot shows the 'Identity' tab in the AirPort Admin utility. It contains three text input fields: 'Name' with the value 'DACE AIR 1', 'Contact' with the value 'Network Administrator', and 'Location' with the value '3rd Street Annex'. Below these fields is a button labeled 'Change Base Station Password...'. The 'Location' field is highlighted with a blue border.

1d. Setting-up an AirPort Base Station

Connecting a new base station using the AirPort Admin utility

Action Steps

| What you type or do | What Happens |
|--|--------------|
| 18. In the Network name text area, type the name of your AirPort network. All Base Stations on the same network should have the exact same name, otherwise roaming from one base station to another will not work. | |
| 19. If there is more than one Base Station on your AirPort network, each adjacent station should have a different channel frequency. Channel frequencies may be repeated at Base Stations that are more than 350 feet from each other. To change the frequency of the Base Station you are configuring, select a number from the Channel frequency selection menu. | |

1d. Setting-up an AirPort Base Station

Connecting a new base station using the AirPort Admin utility

Action Steps

| What you type or do | What Happens |
|--|--------------|
| <p>20. If your Base Station will connect to the Internet using ethernet, as with DSL, ISDN or Local Area Networks, proceed to Page 15 for ethernet configuration.</p> <p>If your Base Station will connect to the Internet using its built-in modem, proceed to Page 16 for modem configuration.</p> | |

1e. Setting-up an AirPort Base Station

Connecting a new base station with ethernet



This page is for ethernet configurations only. If your Base Station will connect to the Internet using its built-in modem, skip to page 16.

Action Steps

| What you type or do | What Happens |
|--|---|
| 1. Click the <i>Internet</i> tab. | |
| 2. Select the <i>Ethernet</i> tab from the <i>Connect Using</i> tab. | |
| 3. Configure all other items under the <i>Internet</i> tab per the instructions of your network administrator. | |
| 4. Click on the <i>Network</i> tab. Deselect the <i>Distribute IP Addresses</i> check-box. | This box may only be selected if, you want this particular base station to distribute IP addresses, no other base stations on the network are configured, and no other DHCP or NAT server exists on the Local Area Network. |
| 5. Click the <i>Update</i> button. | |
| 6. Quit the <i>Airport Admin Utility</i> . | |

1f. Setting-up an AirPort Base Station

Connecting a new base station with a modem



This page is for modem configurations only. If your Base Station will connect to the Internet using ethernet, skip to page 16.

Action Steps

| What you type or do | What Happens |
|--|--|
| 1. Click the <i>Internet</i> tab. | |
| 2. Select the <i>Modem (v.90)</i> tab from the <i>Connect Using</i> tab. | |
| 3. Configure all other items under the <i>Internet</i> tab per the instructions of your Internet Service Provider. | Internet Services which use non-standard Internet protocols, such as America Online, will not work with AirPort. |
| 5. Click the <i>Update</i> button. | |
| 6. Quit the <i>Airport Admin Utility</i> . | |



2. Upgrading Software on a configured base station

What you will need



You must use a Macintosh (which meets the following requirements) in order to upgrade software for each AirPort Base Station on your network. Once upgraded, the AirPort Base Station may be accessed by both Windows and Mac OS computers.

| If you are using | You will need |
|---|---|
| Apple PowerBook (without an internal AirPort Card slot) | <ul style="list-style-type: none">• A Lucent WaveLAN IEEE 802.11 compliant 11Mb PC card• Mac OS 9.0 or higher• Apple AirPort 1.1 software• An AirPort base station |
| Apple AirPort-capable iMac, G4 Tower, or PowerBook G3 | <ul style="list-style-type: none">• An Apple AirPort Card• Mac OS 8.6 or higher• Apple AirPort 1.1 software• An AirPort base station |

2. Upgrading Software on a configured base station

Getting started



Important information about upgrading base station software
If you are upgrading to version 1.1 of the AirPort software from a previous version, you should also upgrade the software in your AirPort Base Station. The new version of the base station software includes additional features, such as access control and active roaming, and is optimized for AirPort 1.1.

Action Steps

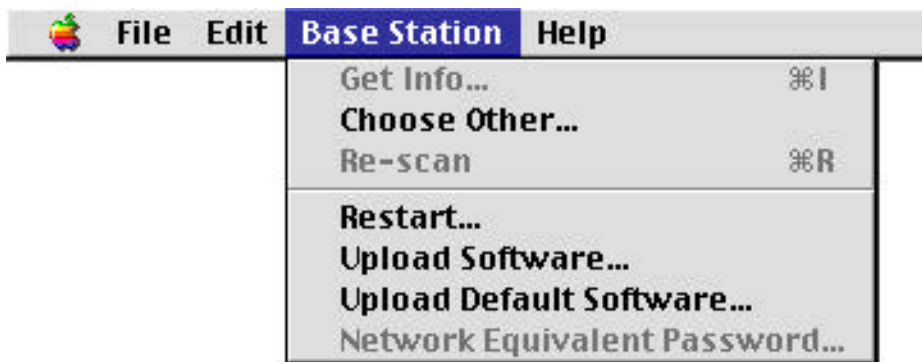
| What you type or do | What Happens |
|---|--------------------------------|
| 1. Make sure that your computer is connected to the AirPort network created by your AirPort Base Station. | |
| 2. Double-click the <i>Hard Drive</i> icon, located in the upper-right hand corner of your Mac OS desktop. | The Hard Drive window appears. |

2. Upgrading Software on a configured base station

Getting started

Action Steps

| What you type or do | What Happens |
|--|---|
| 3. Double-click the <i>Apple Extras</i> folder. | The Apple Extras folder appears |
| 4. Open the <i>AirPort Admin Utility</i> . | The Select Base Station window appears. |
| 5. Select your base station and click <i>configure</i> . | |
| 6. Choose <i>Upload Default Software</i> from the <i>Base Station</i> menu. | After the software has been loaded, the configuration window will close and the base station will restart. All of your base station settings will remain. |



3. Setting up an AirPort-Ready Apple Macintosh for use on an existing AirPort network that is part of a Local Area Network

Getting Started



You must use a Macintosh (which meets the following requirements) in order to upgrade software for each AirPort Base Station on your network. Once upgraded, the AirPort Base Station may be accessed by both Windows and Mac OS computers.

You will need to have

- An Apple AirPort Card
- An AirPort-Ready Apple Macintosh with Mac OS 9 or higher
- A configured AirPort base station

You will need to know

- The name of the AirPort Network you will be connecting to (ask your network Administrator)
- How Internet Protocol (IP) Addresses are assigned to computers on your AirPort network. If IP addresses are assigned manually, you will need to know:
 - The IP address to be used for your computer
 - The subnet mask
 - The router address
 - The Domain Name
 - The name server (also known as domain name server or DNS) address. There may be several order specific DNS addresses to be entered.

3. Setting up an AirPort-Ready Apple Macintosh for use on an existing AirPort network that is part of a Local Area Network

Installing the AirPort Card

Action Steps

| What you type or do | What Happens |
|--|--------------|
| 1. Shut down your computer. | |
| 2. Disconnect the power adapter and all cords. | |
| 3. If your computer is a laptop, remove the battery. | |
| 4. Insert the <i>AirPort</i> card according to the directions and diagrams that came with your AirPort Card. (If your computer came with an AirPort Card already installed, you should skip this step.) | |

3. Setting up an AirPort-Ready Apple Macintosh for use on an existing AirPort network that is part of a Local Area Network

Installing the AirPort Card

Action Steps

| What you type or do | What Happens |
|---|--------------|
| 5. If your computer is a laptop, reinstall the battery. | |
| 6. Reconnect all cord to your computer. | |
| 7. Make sure your computer is in range of an AirPort base station (You may need to consult your network administrator). | |
| 8. Start your computer. | |

3. Setting up an AirPort-Ready Apple Macintosh for use on an existing AirPort network that is part of a Local Area Network

Installing the AirPort Card

Action Steps

| What you type or do | What Happens |
|--|--------------|
| 9. Click the <i>Apple</i> symbol on the command bar and select control panels, AppleTalk. | |
| 10. Select <i>Connect via AirPort</i> from the selection box and close the <i>AppleTalk</i> window. | |
| 11. Open the <i>Apple Control Strip</i> , on the desktop. (If the Control Strip isn't visible you may click the Apple symbol on the command bar and select control panels, Control Strip. Then select Show Control Strip and close the Control Strip window.) | |



3. Setting up an AirPort-Ready Apple Macintosh for use on an existing AirPort network that is part of a Local Area Network

Installing the AirPort Card

Action Steps

| What you type or do | What Happens |
|--|---|
| <p>12. Look at the <i>AirPort</i> module, located on the Control Strip.</p> | <p>Orange dots indicate you are connected to an AirPort network. If all five dots are white, you are not connected to an AirPort network. To remedy this, click the <i>Apple</i> symbol on the command bar and select <i>Control Panels, AirPort</i>. From the selection menu in the AirPort window, select <i>Airport</i>.</p> |
| <p>13. Click the <i>caret</i> symbol, located on the AirPort module. The name of the AirPort network you are connected to will be indicated by a bullet. This name should be the same as the one supplied to you by your Network Administrator.</p> | |

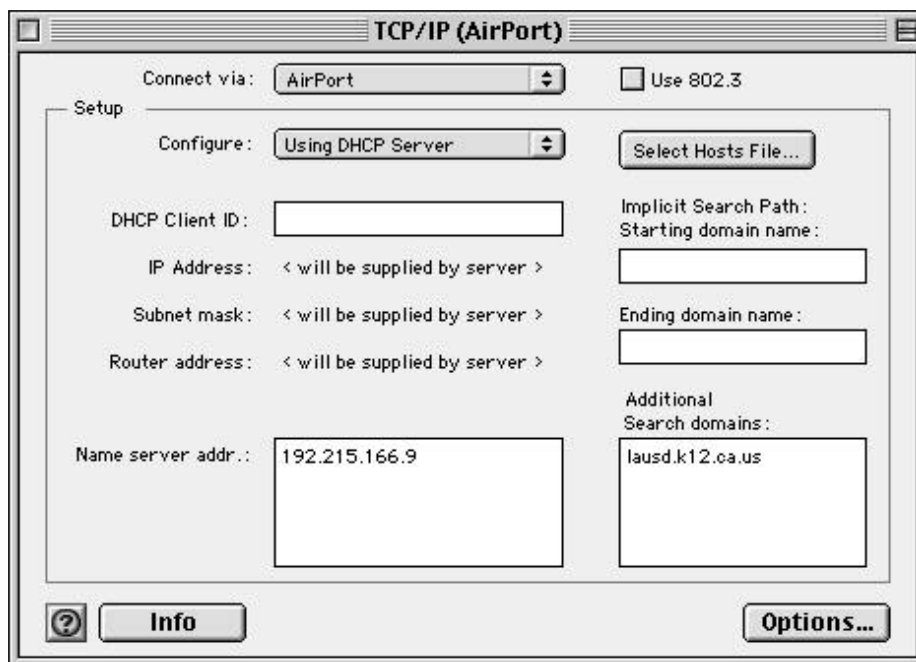


3. Setting up an AirPort-Ready Apple Macintosh for use on an existing AirPort network that is part of a Local Area Network

Configuring

Action Steps

| What you type or do | What Happens |
|---|--------------|
| 14. Click the <i>Apple</i> symbol on the command bar and select <i>Control Panels, TCP/IP</i> . | |
| 15. Select <i>AirPort</i> from the <i>Connect via Selection</i> box. | |



3. Setting up an AirPort-Ready Apple Macintosh for use on an existing AirPort network that is part of a Local Area Network

Installing the AirPort Card

Action Steps

| What you type or do | What Happens |
|--|--------------|
| 16. If IP addresses are assigned automatically over your network, using DHCP, select <i>Using DHCP Server</i> from the <i>Configure</i> selection box. If IP addresses are assigned manually on your network, select <i>Manually</i> from the <i>Configure</i> selection box and fill in your IP address, subnet mask, router address and name server addresses. | |
| 17. Close the <i>TCP/IP</i> window. | |

4. Setting up an AirPort-Ready Apple Macintosh for use on an AirPort connected to a Modem

Getting Started



AirPort is not compatible with non-standard DSL connection protocols used by some Internet Service Providers, such as America Online.

You will need to have

- An Apple AirPort Card
- An AirPort-Ready Apple Macintosh with Mac OS 9 or higher
- A configured AirPort base station

You will need to know

- The name of the AirPort Network you will be connecting to (ask your network Administrator)
- How Internet Protocol (IP) Addresses are assigned to computers on your AirPort network. If IP addresses are assigned manually, you will need to know:
 - The IP address to be used for your computer
 - The subnet mask
 - The router address
 - The Domain Name
 - The name server (also known as domain name server or DNS) address. There may be several order specific DNS address to be entered.

4. Setting up an AirPort-Ready Apple Macintosh for use on an AirPort connected to a Modem

Installing the AirPort Card

Action Steps

| What you type or do | What Happens |
|--|--------------|
| 1. Shut down your computer. | |
| 2. Disconnect the power adapter and all cords. | |
| 3. If your computer is a laptop, remove the battery. | |
| 4. Insert the <i>AirPort card</i> according to the directions and diagrams that came with your AirPort Card. (If your computer came with an AirPort Card already installed, you should skip this step.) | |

4. Setting up an AirPort-Ready Apple Macintosh for use on an AirPort connected to a Modem

Installing the AirPort Card

Action Steps

| What you type or do | What Happens |
|---|--------------|
| 5. If your computer is a laptop, reinstall the battery. | |
| 6. Reconnect all cord to your computer. | |
| 7. Make sure your computer is in range on an AirPort base station (You may need to consult your network administrator). | |
| 8. Start your computer. | |

4. Setting up an AirPort-Ready Apple Macintosh for use on an AirPort connected to a Modem Configuring

Action Steps

| What you type or do | What Happens |
|---|--------------|
| <p>9. Click the <i>Apple</i> symbol on the <i>command bar</i> and select <i>control panels, AppleTalk</i>.</p> | |
| <p>10. Select <i>Connect via AirPort</i> from the selection box and close the <i>AppleTalk</i> window.</p> | |
| <p>11. Open the <i>Apple Control Strip</i>, on the <i>desktop</i>. (If the Control Strip isn't visible you may click the <i>Apple</i> symbol on the <i>command bar</i> and select <i>Control Panels, Control Strip</i>. Then select <i>Show Control Strip</i> and close the <i>Control Strip</i> window.</p> | |



4. Setting up an AirPort-Ready Apple Macintosh for use on an AirPort connected to a Modem Configuring

Action Steps

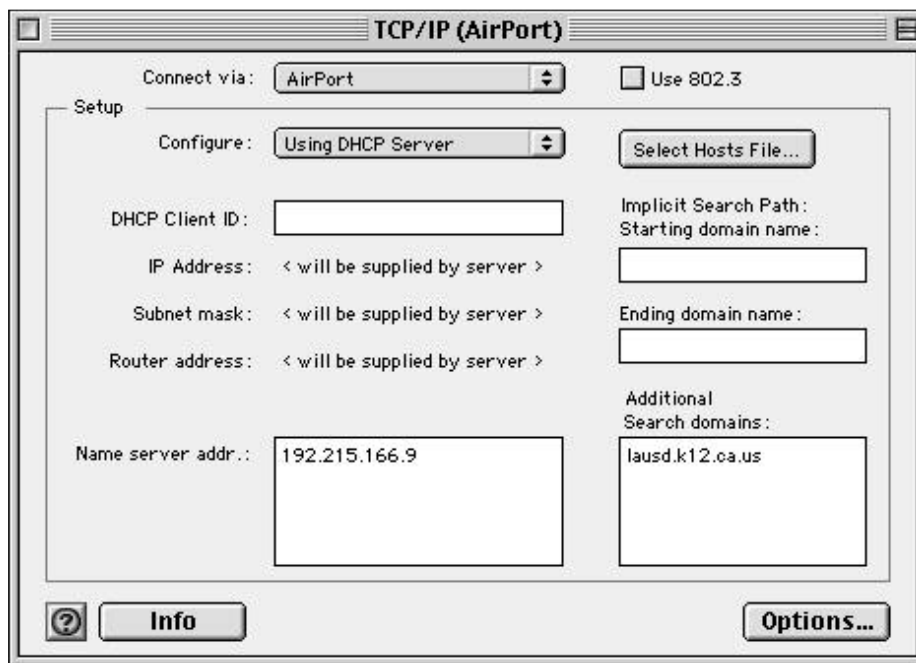
| What you type or do | What Happens |
|--|--|
| <p>12. Look at the <i>AirPort</i> module, located on the <i>Control Strip</i>.</p> | <p>Orange dots indicate you are connected to an AirPort network. If all five dots are white, you are not connected to an AirPort network. To remedy this click the <i>Apple</i> symbol on the <i>command bar</i> and select Control Panels, AirPort. From the selection menu in the AirPort window, select AirPort.</p> |
| <p>13. Click the <i>caret</i> symbol, located on the AirPort module. The name of the AirPort network you are connected to will be indicated by a bullet. This name should be the same as the one supplied to you by your Network Administrator.</p> | |



4. Setting up an AirPort-Ready Apple Macintosh for use on an AirPort connected to a Modem Configuring

Action Steps

| What you type or do | What Happens |
|--|--------------|
| 14. Click the <i>Apple</i> symbol on the <i>command bar</i> and select <i>Control Panels, TCP/IP</i> . | |
| 15. Select <i>AirPort</i> from the <i>Connect via</i> selection box. | |



4. Setting up an AirPort-Ready Apple Macintosh for use on an AirPort connected to a Modem

Configuring

Action Steps

| What you type or do | What Happens |
|---|--------------|
| 16. <i>S Using DHCP Server</i> from the <i>Configure</i> selection box. | |
| 17. Close the <i>TCP/IP</i> window. | |

5. Setting up a Windows PC for use on an AirPort network that is part of a Local Area Network

Getting Started



AirPort is not compatible with non-standard DSL connection protocols used by some Internet Service Providers, such as America Online.

PCs can not be configured to use the AirPort modem.

You will need to have

- An PC Laptop Computer running Windows 95, 98 or 2000 (formerly NT) and equipped with a PCMCIA slot (A desktop computer equipped with a PCMCIA card slot will also work.)
- A Lucent WaveLAN Silver or Gold label IEEE Turbo 11 Mb PCMCIA card
- A WaveLAN ISA or PCI adaptor (not required for a laptop or any other PC equipped with a PCMCIA card slot)
- A configured AirPort base station

You will need to know

- The name of the AirPort Network you will be connecting to (ask your network Administrator)
 - How Internet Protocol (IP) Addresses are assigned to computers on your AirPort network. If IP addresses are assigned manually, you will need to know the IP address to be used for your computer. (This number will be unique to each computer on your network.
4. You will also need to know:
- The letter designation of your CD-ROM drive.
 - The name of your Windows Workgroup
 - Your User name and Password for your Windows Workgroup
 - The subnet mask
 - The router address
 - The Domain Name
 - The name server (also known as domain name server or DNS) address. There may be several order specific DNS address to be entered.

5. Setting up a Windows PC for use on an AirPort network that is part of a Local Area Network

Configuring

Action Steps

| What you type or do | What Happens |
|---|--------------|
| 1. Shut down your computer. | |
| 2. Insert your WaveLAN card into the <i>PCMCIA slot</i> of your laptop. | |
| 3. Start your computer. | |
| 4. Wait until the <i>Update Device Driver Wizard</i> window appears, informing you that the wizard will complete the installation of the Lucent Technologies WaveLAN/IEEE. | |
| 5. Insert the <i>WaveLAN Wireless LAN Software</i> CD-ROM, which came with your WaveLAN Card, into the <i>CD-ROM</i> drive of your computer. | |

5. Setting up a Windows PC for use on an AirPort network that is part of a Local Area Network

Configuring

Action Steps

| What you type or do | What Happens |
|---|--------------|
| 6. Wait about half a minute in order to give your Computer enough time to recognize the loaded CD-ROM. | |
| 7. Click the <i>Next</i> button, located at the bottom of the <i>Update Device Driver Wizard</i> window. | |
| 8. The text on screen will inform you to wait while Windows searches for an updated driver for this device. Click the <i>Other Locations</i> button once it appears (toward the bottom of the Update Device Driver Wizard window). | |

5. Setting up a Windows PC for use on an AirPort network that is part of a Local Area Network

Configuring

Action Steps

| What you type or do | What Happens |
|---|--|
| <p>9. Once the text onscreen informs you that Windows found a driver for this device with a name similar to “WaveLAN/IEEE PC Card” click the <i>Finish</i> button.</p> | <p>If an Insert Disk dialog box appears asking you to insert the WaveLAN installation CD-ROM into your computer:</p> <p style="padding-left: 40px;">Click the <i>OK</i> button.</p> <p style="padding-left: 40px;">In the <i>Copy file from</i> text area, type the letter designation of your CD-ROM drive followed by a <i>colon</i> and <i>backslash</i>.</p> <p style="padding-left: 40px;">Click the <i>OK</i> button.</p> |
| <p>10. When the WaveLAN/IEEE PC Card Properties window appears, click on the <i>Basic</i> tab.</p> | |



5. Setting up a Windows PC for use on an AirPort network that is part of a Local Area Network

Configuring

Action Steps

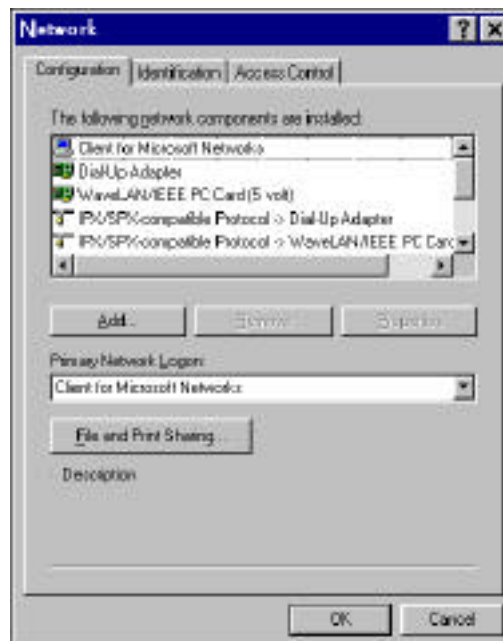
| What you type or do | What Happens |
|--|--------------|
| 11. In the <i>WaveLAN Network Name</i> text area, type the name of your AirPort Network that was given to you by your Network Administrator. | |
| 12. In the <i>Station Name</i> text area, type the name of your computer (any name you choose). | |
| 13. If an <i>Insert Disk</i> dialog box appears asking you to insert the “Windows...” CD-ROM, insert your Windows operating system CD-ROM into your computer and click <i>OK</i> . | |

5. Setting up a Windows PC for use on an AirPort network that is part of a Local Area Network

Configuring

Action Steps

| What you type or do | What Happens |
|--|--------------|
| 14. From the Start menu, select Settings and <i>Control Panel</i> . | |
| 15. Double-click to open the <i>Network Control Panel</i> . | |
| 16. From the list of installed network components, select the TCP/IP WaveLAN/IEEE PC Card and click the <i>Properties</i> button | |



5. Setting up a Windows PC for use on an AirPort network that is part of a Local Area Network

Configuring

Action Steps

| What you type or do | What Happens |
|--|--------------|
| 17. Select the <i>DNS Configuration</i> tab. | |
| 18. Select the <i>Enable DNS radio</i> button. | |
| 19. In the <i>Host text</i> area, type the name of your computer (this may be any name you choose). | |

5. Setting up a Windows PC for use on an AirPort network that is part of a Local Area Network

Configuring

Action Steps

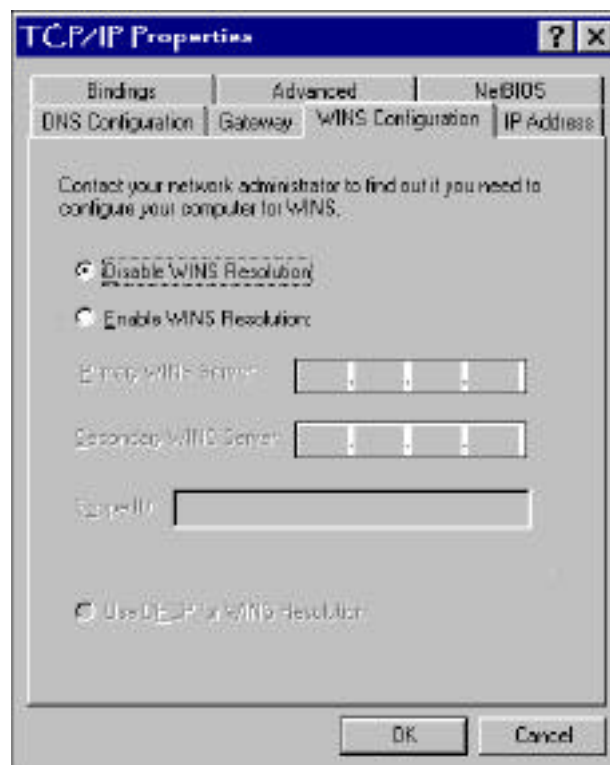
| What you type or do | What Happens |
|---|--------------|
| 20. In the <i>Domain</i> text area, type the domain name given to you by your Network Administrator. | |
| 21. In the <i>DNS Server Search Order</i> text area enter the <i>DNS number</i> given to you by your Network Administrator and click <i>Add</i> . | |
| 22. Click on the <i>Gateway</i> tab. | |
| 23. In the <i>New gateway</i> text area, type the gateway given to you by your Network Administrator and click <i>add</i> . | |

5. Setting up a Windows PC for use on an AirPort network that is part of a Local Area Network

Configuring

Action Steps

| What you type or do | What Happens |
|--|--------------|
| 24. Click on the <i>WINS Configuration</i> tab. | |
| 25. Select the <i>Disable WINS Resolution</i> radio button (unless instructed otherwise by your Network Administrator). | |
| 26. Click on the <i>IP Address</i> tab. | |



5. Setting up a Windows PC for use on an AirPort network that is part of a Local Area Network

Configuring

Action Steps

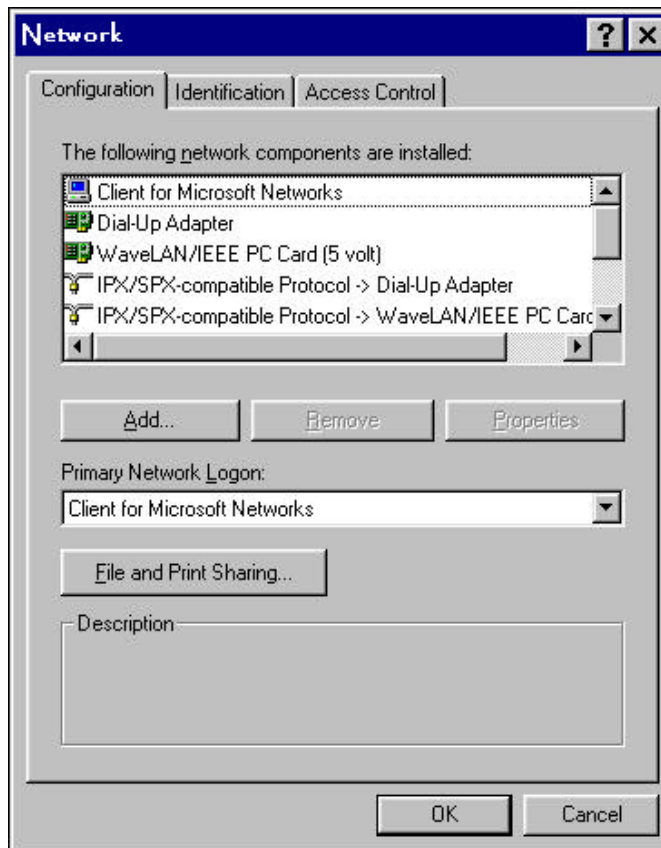
| What you type or do | What Happens |
|--|--------------|
| 27. If Internet Protocol (IP) addresses are assigned to your Airport network using Dynamic Host Control Protocol (DHCP) click the <i>Obtain an IP address automatically</i> radio button. Otherwise, click the <i>Specify an IP address</i> radio button and enter the IP address and Subnet Mask supplied by your Network Administrator. | |
| 28. Click the <i>OK</i> button at the bottom of the <i>TCP/IP Properties</i> window. | |
| 29. Click the <i>OK</i> button at the bottom of the <i>Network window</i> . | |

5. Setting up a Windows PC for use on an AirPort network that is part of a Local Area Network

Configuring

Action Steps

| What you type or do | What Happens |
|---|--------------|
| 30. When prompted to restart your computer, click the <i>Yes</i> button. | |
| 31. Wait for your computer to restart. | |
| 32. Open the <i>Network Control Panel</i> . | |



5. Setting up a Windows PC for use on an AirPort network that is part of a Local Area Network

Configuring

Action Steps

| What you type or do | What Happens |
|---------------------|--|
| 33. | <p>Among the list of network components installed (under the configuration tab) should be:</p> <ul style="list-style-type: none"> • Client for Microsoft Networks • File and printer sharing for Microsoft Networks <p>If either of these network components are not installed, do the following (unless advised otherwise by your network administrator):</p> <p>Click the <i>Add</i> button. Select <i>Service</i> and click <i>Add</i>. Under <i>Manufacturers</i>, select <i>Microsoft</i>. Under <i>Network Services</i>, select <i>File and printer sharing for Microsoft Networks</i>. Click the <i>OK</i> button. From the <i>Network</i> window, click the <i>OK</i> button. You may be prompted to insert your operating systems CD-ROM (i.e. Windows 95) into your computer. If so, follow the prompts onscreen. When prompted to restart your computer click the <i>Yes</i> button.</p> |

5. Setting up a Windows PC for use on an AirPort network that is part of a Local Area Network

Configuring

Action Steps

| What you type or do | What Happens |
|---|--------------|
| 34. Click on the <i>Identification</i> tab. | |
| 35. In the <i>Computer Name</i> text area, type the name of your computer. This may be any name you choose, not to exceed 15 characters in length. | |

5. Setting up a Windows PC for use on an AirPort network that is part of a Local Area Network

Configuring

Action Steps

| What you type or do | What Happens |
|---|--------------|
| 37. In the <i>Workgroup</i> text area, type the name of your Windows Workgroup given to you by your Network Administrator. | |
| 38. Click the <i>OK</i> button on the <i>Network window</i> . | |
| 39. When prompted to restart your computer, click the <i>Yes</i> button. | |
| 40. Wait for your computer to restart. | |

5. Setting up a Windows PC for use on an AirPort network that is part of a Local Area Network

Configuring

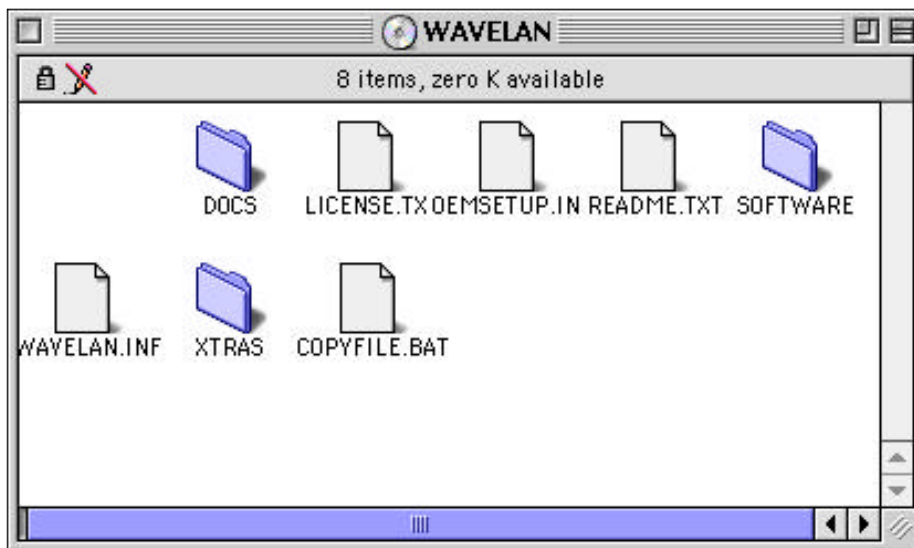
Action Steps

| What you type or do | What Happens |
|--|--------------|
| 41. When prompted to enter your <i>User name</i> and <i>Password</i> for <i>Microsoft Networking</i> , do so and click the <i>OK</i> button | |
| 42. If prompted to set your <i>Windows Password</i> , you may reenter your <i>Microsoft Networking Password</i> and click the <i>OK</i> button. | |

6. Setting-up Airport on Your Apple PowerBook Using a Lucent WaveLan PCMCIA Card

Action Steps

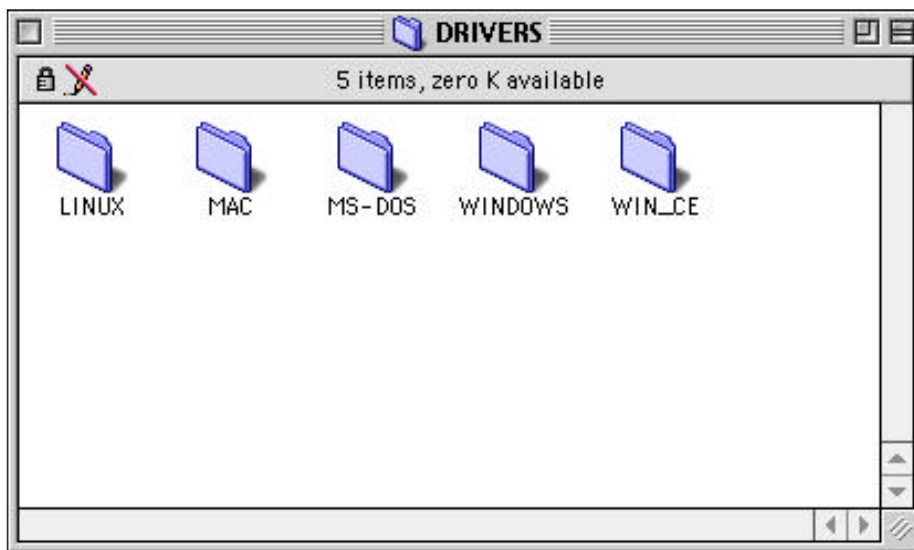
| What you type or do | What Happens |
|---|---|
| 1. Insert the <i>WaveLAN PCMCIA</i> card into your <i>PowerBook</i> . | The AirPort card's icon will appear on the desktop. |
| 2. Insert the <i>WAVELAN CD-ROM</i> into the <i>CD-ROM drive</i> and double-click the <i>WAVELAN CD-ROM</i> icon. | The WAVELAN CD-ROM window will appear. |
| 3. Double-click to open the <i>SOFTWARE</i> folder. | The SOFTWARE folder's window will appear. |
| 4. Double-click to open the <i>ADAPTER</i> folder. | The ADAPTER folder's window will appear. |
| 5. Double-click to open the <i>PC_CARD</i> folder. | The PC-CARD folder's window will appear. |



6. Setting-up Airport on Your Apple PowerBook Using a Lucent WaveLan PCMCIA Card

Action Steps

| What you type or do | What Happens |
|---|---|
| 6. Double-click to open the <i>DRIVERS</i> folder. | The DRIVERS folder's window will appear. |
| 7. Double-click to open the <i>MAC</i> folder. | The MAC folder's window will appear. |
| 8. Drag the <i>APT40611.HQX</i> icon onto the <i>Desktop</i> . | A copy of the file will be placed on the desktop. |
| 9. Double-click to open the <i>Hard Drive</i> icon (upper right-hand corner of the <i>Desktop</i> .) | The HARD DRIVE's window will appear. |



6. Setting-up Airport on Your Apple PowerBook Using a Lucent WaveLan PCMCIA Card

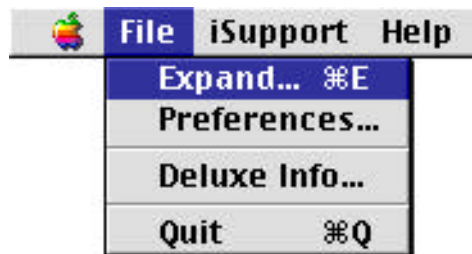
Action Steps

| What you type or do | What Happens |
|---|--|
| 10. Double-click to open the <i>Internet</i> folder. | The Internet folder's window will appear. |
| 11. Double-click to open the <i>Internet Utilities</i> folder. | The Internet Applications folder's window will appear. |
| 12. Double-click to open the <i>Aladdin</i> folder. | The Aladdin folder's window will appear. |
| 13. Double-click to open the <i>Stuffit Expander</i> folder. | The Stuffit Expander folder's window will appear. |
| 14. Double-click to open <i>Stuffit Expander</i> . | The Stuffit Expander Application will open. |

6. Setting-up Airport on Your Apple PowerBook Using a Lucent WaveLan PCMCIA Card

Action Steps

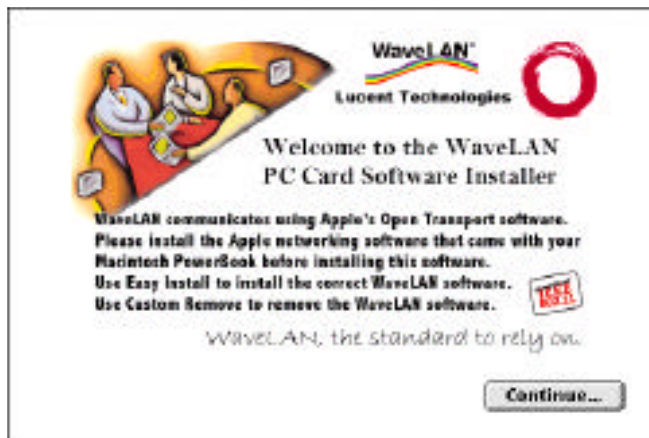
| What you type or do | What Happens |
|---|---|
| 15. From the <i>Command Bar</i> select <i>File</i> and then <i>Expand</i> . | An Open File Dialog Box will appear. |
| 16. Click once on the <i>Desktop</i> button. | The contents of the desktop will appear as a scrollable list. |
| 17. Select the <i>APT40611.HQX</i> file and click <i>Expand</i> . | The WaveLAN Install Disk will be placed on the desktop. |
| 18. From the <i>Command Bar</i> select <i>File</i> and then <i>Quit</i> . | Stuffit Expander will quit and you will be returned to the desktop. |
| 19. From the <i>Desktop</i> double-click to open the <i>WaveLAN Install Disk</i> . | The WaveLAN Install Disk's window will appear. |



6. Setting-up Airport on Your Apple PowerBook Using a Lucent WaveLan PCMCIA Card

Action Steps

| What you type or do | What Happens |
|--|--------------|
| 20. Double-click the <i>WaveLAN Installer</i> . From the <i>WaveLAN</i> splash screen click Continue . | |
| 21. From the <i>WaveLAN Installer</i> window click the <i>Easy Install</i> pop-up menu and select Custom Install . | |
| 22. Select the <i>WaveLAN PC Card Networking Software (PCI)</i> . | |
| 23. Click Install . | |
| 24. Restart your computer. | |



6. Setting-up Airport on Your Apple PowerBook Using a Lucent WaveLan PCMCIA Card

Action Steps

| What you type or do | What Happens |
|---|--------------|
| 25. Click the <i>Apple</i> symbol on the command bar and select <i>control panels, AppleTalk</i> . | |
| 26. Select <i>Connect via WaveLAN</i> from the selection box and close the <i>AppleTalk</i> window. | |

6. Setting-up Airport on Your Apple PowerBook Using a Lucent WaveLan PCMCIA Card

Action Steps

| What you type or do | What Happens |
|---|--------------|
| 27. Click the <i>Apple</i> symbol on the command bar and select <i>Control Panels, TCP/IP</i> . | |
| 28. Select <i>WaveLAN</i> from the <i>Connect via Selection</i> box. | |

6. Setting-up Airport on Your Apple PowerBook Using a Lucent WaveLan PCMCIA Card

Action Steps

| What you type or do | What Happens |
|--|--------------|
| 32. If IP addresses are assigned automatically over your network, using DHCP, select <i>Using DHCP Server</i> from the <i>Configure</i> selection box. If IP addresses are assigned manually on your network, select <i>Manually</i> from the <i>Configure</i> selection box and fill in your IP address, subnet mask, router address and name server addresses. | |
| 33. Close the <i>TCP/IP</i> window. | |